

# SPECIFICATIONS

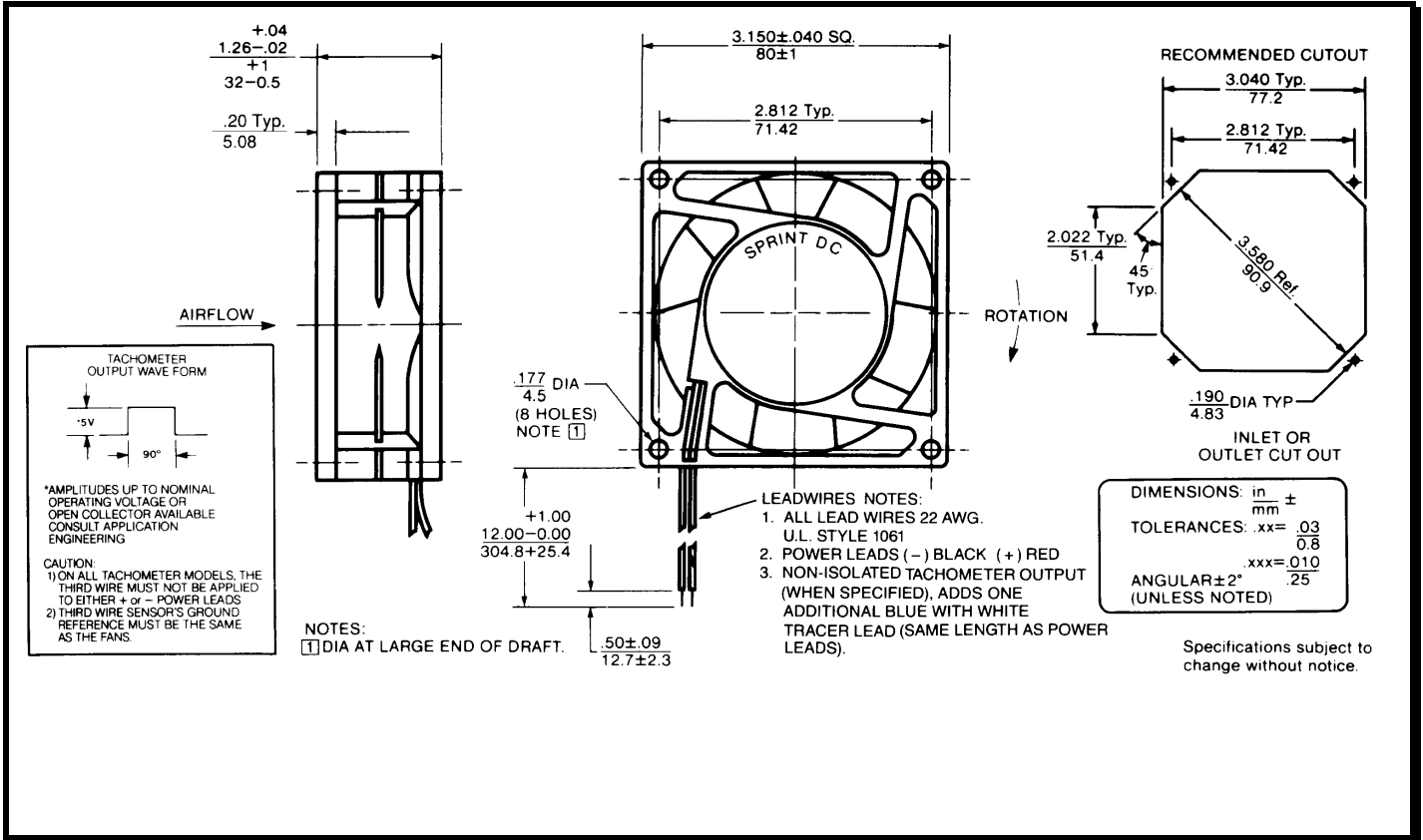
(RoHS Compliant)

**Model Number:** STD12B3E2X-E3  
**Part Number:** 17001129A

**Version:** 00  
**Jun 12, 2018**



## Mechanical Drawing:



## Motor:

Nominal Voltage = 12 vdc  
Operating Voltage Range = 8-16 vdc  
Nominal Running Current = 0.280 amps  
Max. Locked Rotor Current = 0.700 amps  
Running Power = 3.4 watts  
Average Speed = 3400 RPM  
Bearings = Ball  
Air Flow = 32 CFM  
Acoustic = 40.9 dBA

## Construction:

Venturi: Plastic, Black, UL 94V-0  
Propeller: Plastic, Black, UL 94V-0

## Life Expectancy:

This fan is designed for continuous duty life of 45,000 hours at 70°C.

## Termination:

12"±1" (304.8±25.4mm) 22AWG UL1061 Leadwires  
Red = Power(+)  
Black = Return(-)  
Blue/White = Tach output  
Yellow = PWM control

## Additional Features:

Brushless DC Motor  
Automatic Restart Capability  
Electronic Locked Rotor Protection  
Polarity Protected  
Operating Temperature: -10°C to 70°C  
Storage Temperature: -40°C to 85°C  
Environmental Protection: Type 3(IP68)

## TACHOMETER:

Output: Open Collector  
Ic: 20 mA max.  
Vcc: 32 Vdc max.  
Pulses per Revolution: 2  
Isolated: No

## Speed Control:

PWM: 200 ~ 2 KHz, Open Collector  
<10% Duty: Off  
10%~95% Duty: Linear Ramp  
>95% Duty or Open Lead Wire: Full Speed

## Agencies:

UL, CUL, CE

PQ Curve:

