

# SPECIFICATIONS

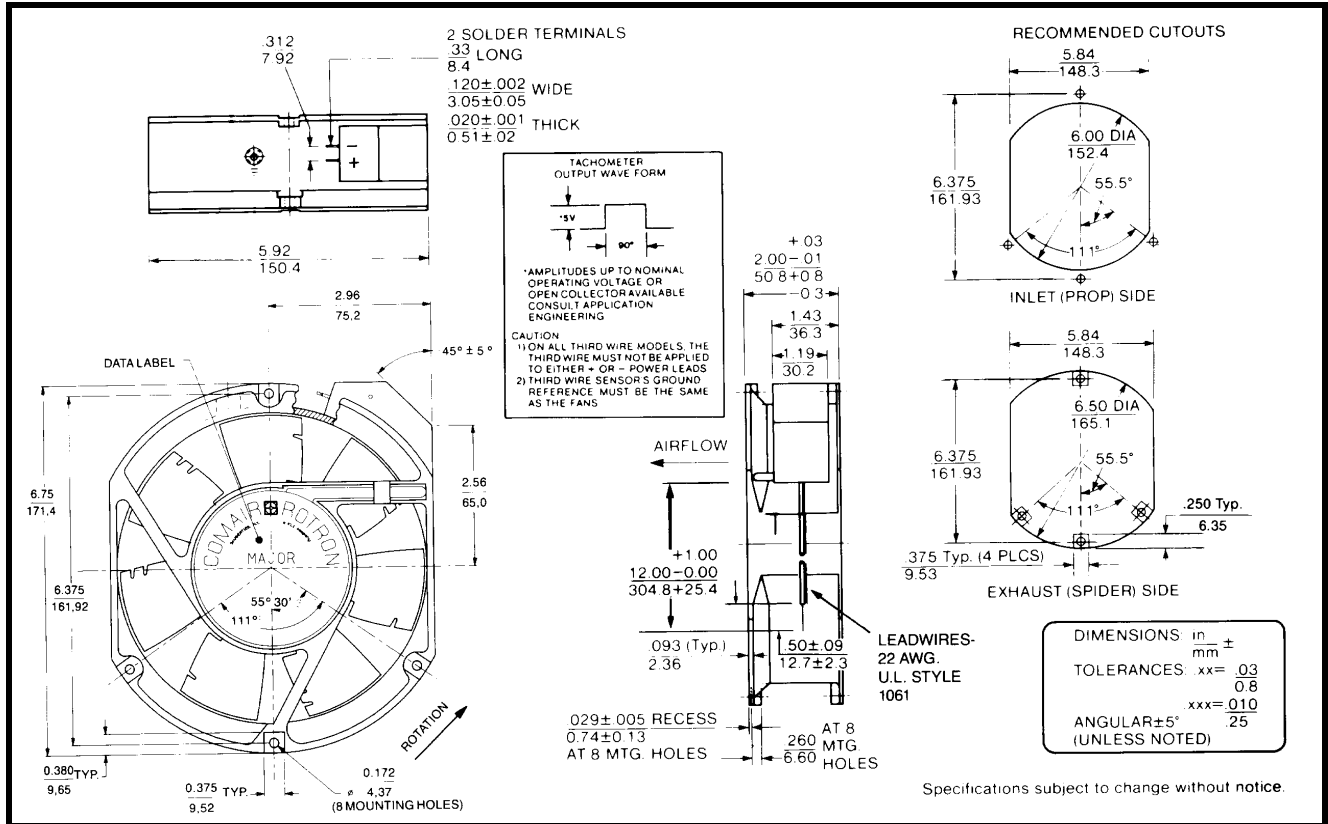
RoHS Compliant



**Model Number:** JQD24B3E2X-E3  
**Part Number:** 17001182A

**Rev:**00  
**Jun 12, 2018**

## Mechanical Drawing:



## Motor:

Nominal Voltage	= 24 vdc
Operating Voltage Range	= 16 - 32 vdc
Nominal Running Current	= 1.0mps
Locked Rotor Current	= 2.0 amps
Running Power	= 24 watts
Average Speed	= 3400 RPM
Bearings	= Ball
Air Flow	= 235 CFM
Acoustic	= 54.3 dBA

## Construction:

Venturi: Die-cast aluminum, painted black  
 Propeller: Plastic, painted black

## Life Expectancy:

This fan is designed for continuous duty life of 58,000 hours at 70°C.

## Termination:

12"±1"(304.8±25.4mm)	22AWG UL1061 Leadwires
Red	= Power(+)
Black	= Return(-)
Blue/White	= Tach output
Yellow	= PWM control

## Additional Features:

Brushless DC Motor	
Soft Start Inrush Current	
Electronic Locked Rotor Protection	
Polarity Protected	
Automatic Restart Capability	
Operating Temperature:	-10°C to 70°C
Storage Temperature:	-40°C to 85°C
Environmental Protection:	Type 3(IP68)

## TACHOMETER:

Output:	Open Collector
Ic:	20 mA max.
Vcc:	32 Vdc max.
Pulses per Revolution:	2
Isolated:	No

## Speed Control:

PWM:	200 ~ 2 KHz, Open Collector
<10% Duty:	Off
10%~95% Duty:	Linear Ramp
>95% Duty or Open Lead Wire:	Full Speed

## Agency Approvals:

UL, CUL, CE

PQ Curve:

