

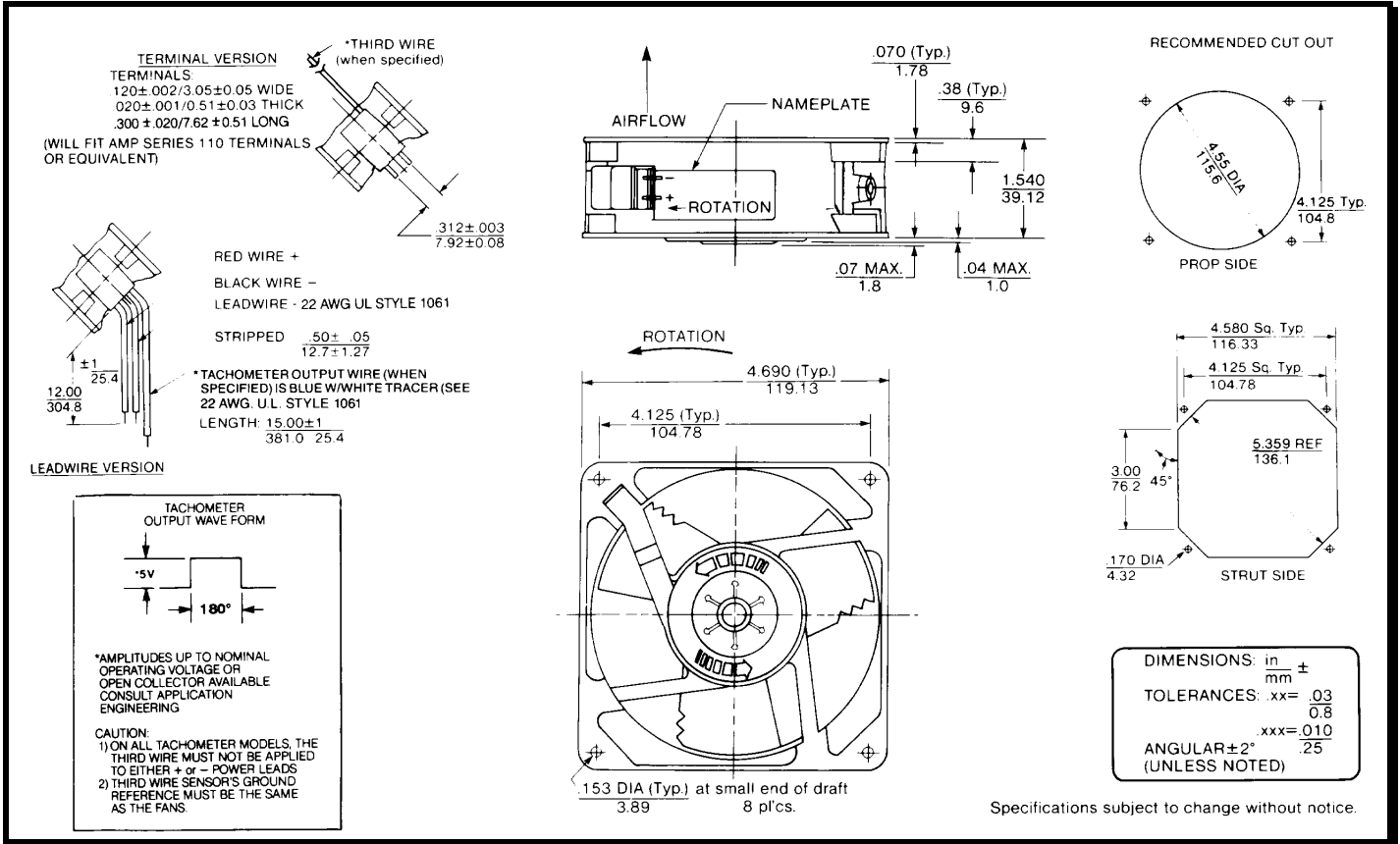
# SPECIFICATIONS



**Model Number:** MD48B9  
**Part Number:** 19028890A

**Version:** 01  
**Mar 12, 2019**

## Mechanical Drawing:



## Motor:

Nominal Voltage = 48 vdc  
 Operating Voltage Range = 24 – 56 vdc  
 Nominal Running Current = 0.120 amps  
 Locked Rotor Current = 0.400 amps  
 Running Power = 5.8 watts  
 Average Speed = 3100 rpm  
 Bearings = Ball  
 Air Flow = 106 CFM  
 Acoustic = 50.0 dBA

## Construction:

Venturi: Die-Cast Zinc Alloy, Black  
 Propeller: Polypropylene, Black, UL94V-0

## Agency Certifications:

UL, CUL, CE

## Life Expectancy:

This fan is designed for continuous duty life of 55,000 hours at 70°C

## Additional Features:

Brushless DC Motor  
 Automatic Restart Capability  
 Locked Rotor Protection  
 Polarity Protected  
 Operating Temperature: -10°C to 70°C  
 Storage Temperature: -40°C to 85°C

## Tachometer Output:

Output: 5 volt TTL Compatible  
 I<sub>c</sub>: 5mA Typical  
 Pulses per Revolution: 1  
 Isolated: No

## Termination:

Two solder terminals for fan power and return  
 Third wire, 12" length, 22 AWG, UL1061  
 Blue/White = Tachometer Output

PQ Curve:

