

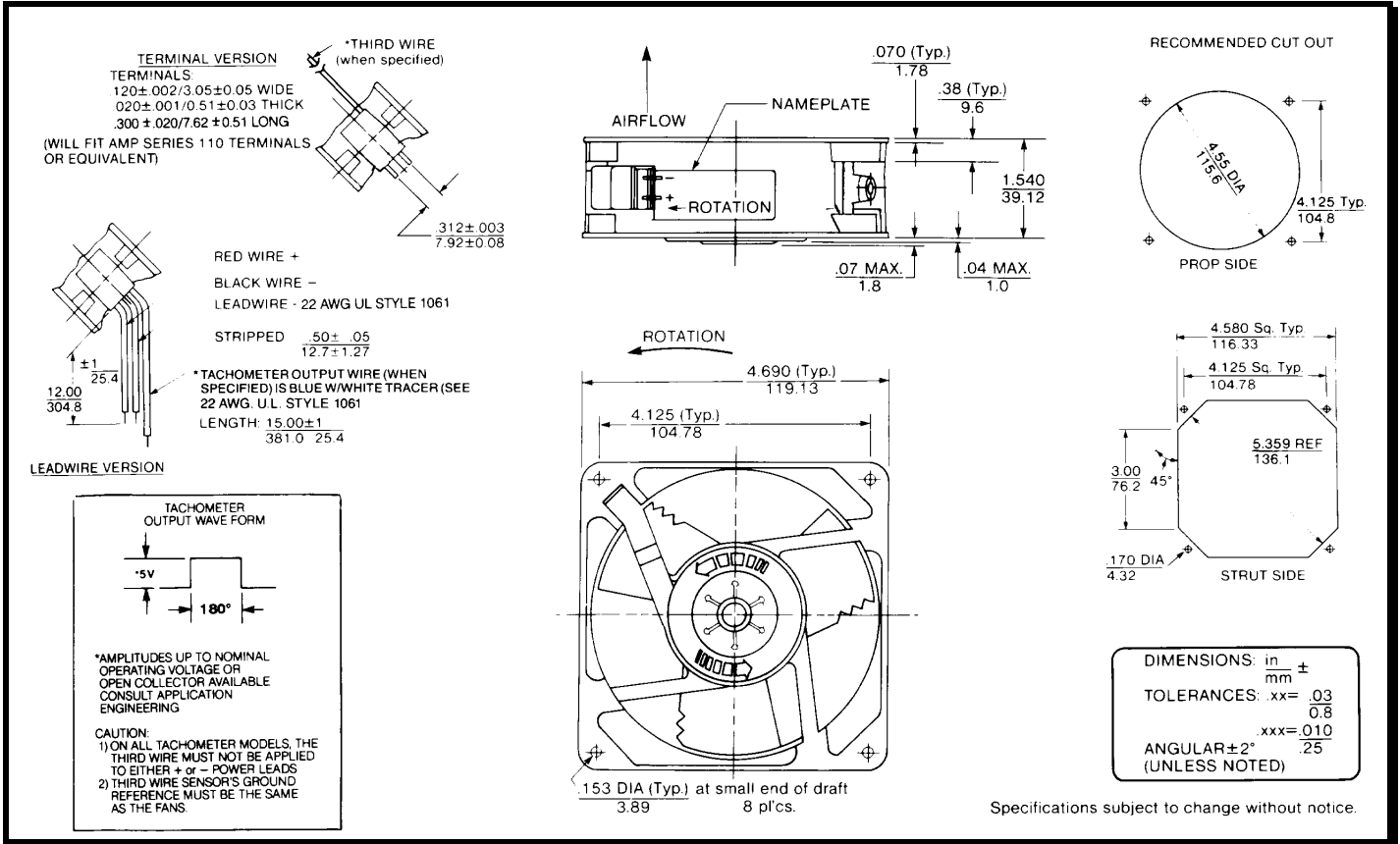
SPECIFICATIONS



Model Number: WD12C3
Part Number: 19030715A

Version: 01
Feb 27, 2024

Mechanical Drawing:



Motor:

Nominal Voltage = 12 vdc
 Operating Voltage Range = 6 – 14 vdc
 Nominal Running Current = 0.180 amps
 Locked Rotor Current = 0.750 amps
 Running Power = 2.16 watts
 Average Speed = 2250 RPM
 Bearings = Ball
 Air Flow = 77.5 CFM
 Acoustic = 39.4 dBA

Construction:

Venturi: Die-Cast Zinc Alloy, Black
 Propeller: Plastic, Black, UL 94V-0

Life Expectancy:

This fan is designed for continuous duty life of 55,000 hours at 70°C.

Additional Features:

Brushless DC Motor
 Locked Rotor Protection
 Polarity Protection
 Automatic Restart Capability
 Operating Temperature: -10°C to 70°C
 Storage Temperature: -40°C to 85°C

Agency Approvals:

UL, CUL, CE

Termination:

12" Lead wires, 22 AWG, UL 1061
 Red = Power (+)
 Black = Ground (-)

PQ Curve:

