

SPECIFICATIONS

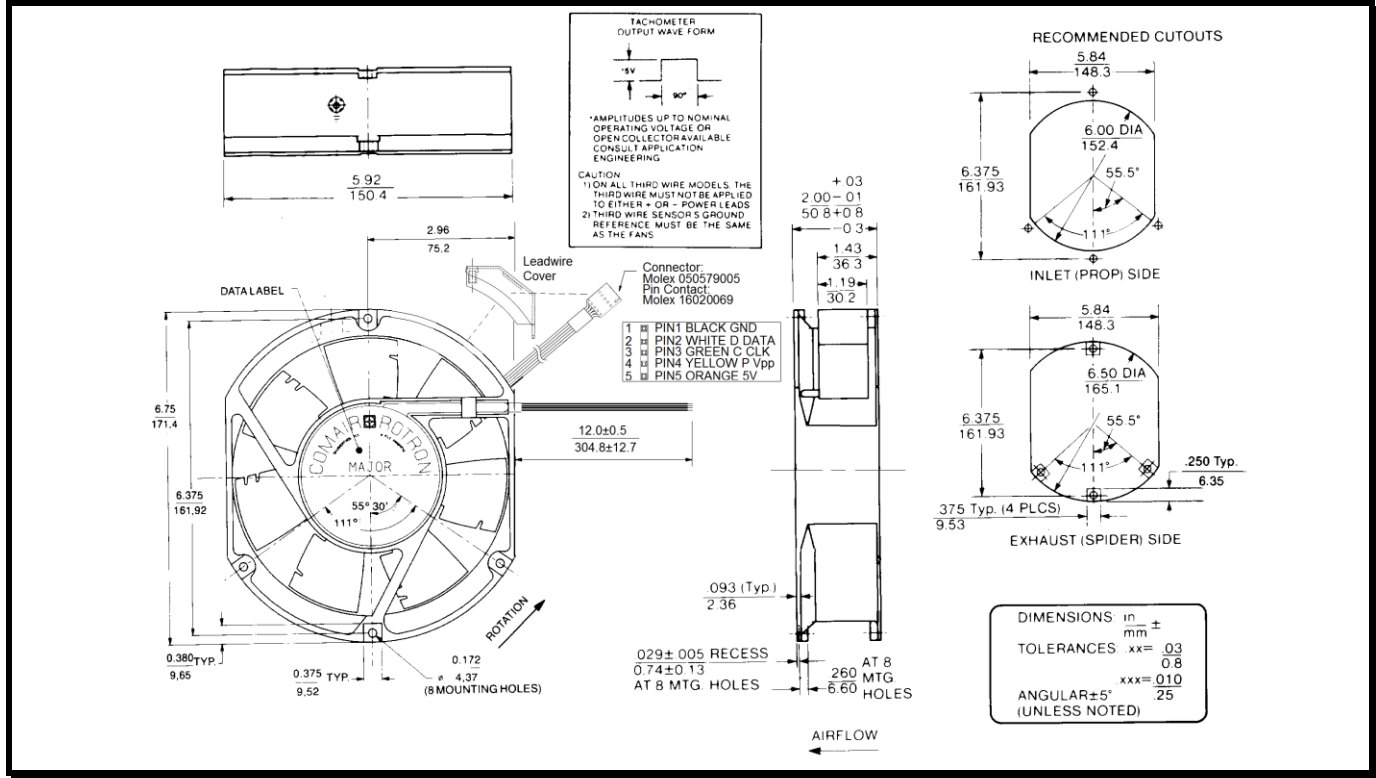
(RoHS Compliant)

Model Number: JQD24Z3A2
Part Number: 19039692A

Version: 01
Nov 23, 2017



Mechanical Drawing:



Motor:

Nominal Voltage = 24 vdc
Operating Voltage Range = 12 – 32 vdc
Nominal Running Current = 1.450 amps
Locked Rotor Current = 2.500 amps
Running Power = 35 watts
Average Speed = 4500 rpm
Bearings = Ball
Air Flow = 305CFM
Static Pressure = 1.37" of Water
Acoustic = 60.4dBA

Construction:

Venturi: Die-Cast Aluminum, Black
Propeller: Polycarbonate, Black, UL 94V-0

Agency Approvals:

UL, CUL, CE,

Life Expectancy:

This fan is designed for continuous duty life of 58,000 hours at 70°C.

Additional Features:

Brushless DC Motor
Soft Start Inrush Current
Electronic Locked Rotor Protection
Polarity Protected
Automatic Restart Capability
Operating Temperature: -40°C to 85°C
Storage Temperature: -40°C to 85°C
Programmable: PWM Input, 5 volt TTL
0% Duty: Off
100% Duty: 4500 RPM

Tachometer Specifications:

Output: 5 volt TTL compatible
Ic: 5 mA. Typ.
Pulses per Revolution: 2
Isolated: No

Termination:

12" Leadwires, 22 AWG, UL 1061
Red - Power (+) Blue/White - Tachometer
Black - Return (-) Yellow - Program Lead
2" Programmable harness,
Connector, Molex 050579005
Pin Contact, Molex 16020069

PQ Curve:

