

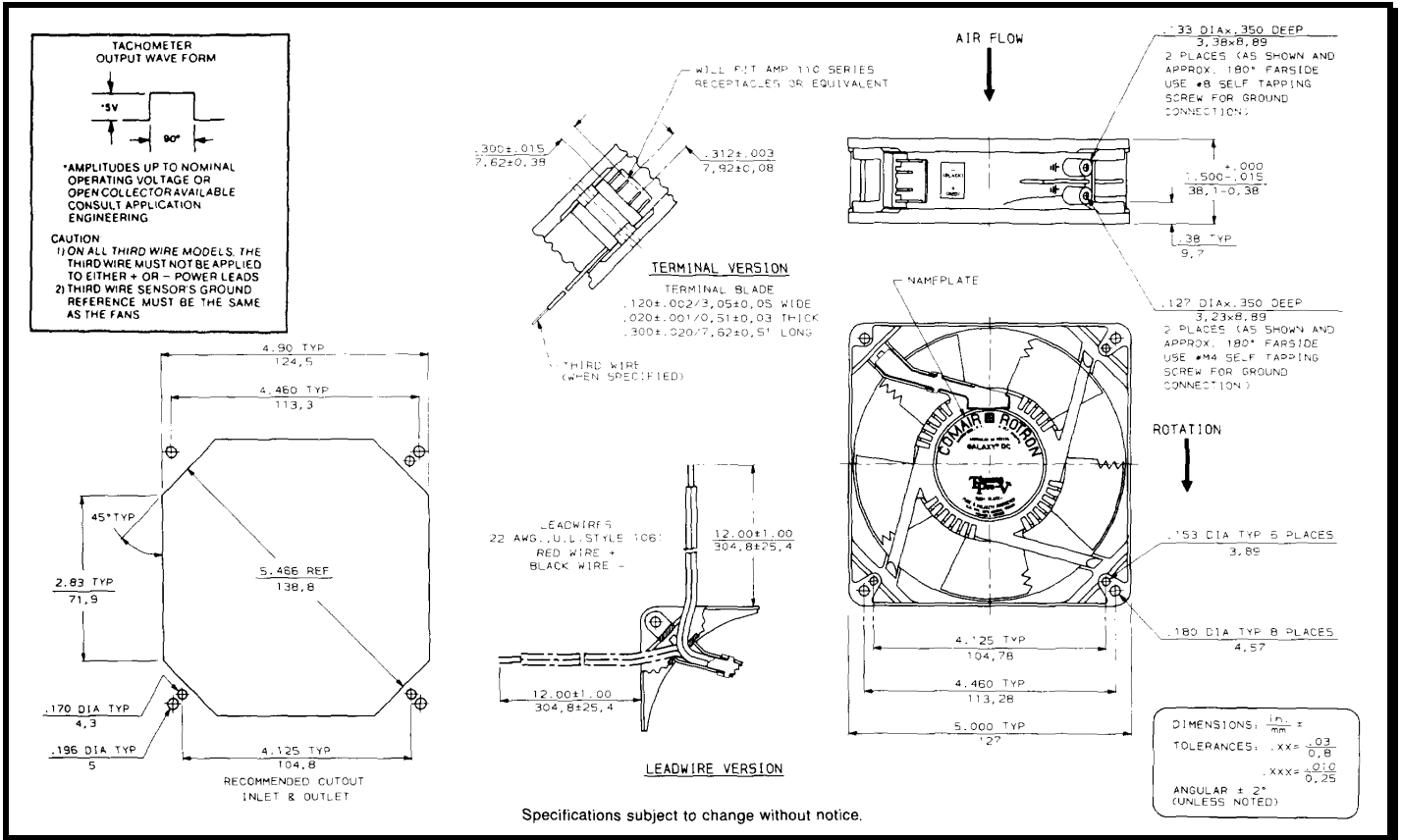
SPECIFICATIONS

Model Number: GL24S3TDN-E2
Part Number : 19039992A

Version: 01
Jan 18, 2018



Mechanical Drawing:



Motor: (Max Speed)

Nominal Voltage = 24 vdc
 Operating Voltage Range = 12 - 28 vdc
 Nominal Running Current = 0.630 amps
 Locked Rotor Current = 1.350 amps
 Running Power = 15.1 Watts
 Average Speed = 3300 RPM
 Bearings = Ball
 Air Flow = 150 CFM
 Acoustic = 53.6 dBA

Construction:

Venturi: Die Cast Zinc, Black
 Propeller: Plastic, Black, UL 94V-0

Life Expectancy:

This fan is designed for continuous duty life of 60,000 hours at 70°C.

Agency Certifications:

UL, CUL, CE

Additional Features:

Brushless DC Motor
 Locked Rotor Protection
 Automatic Restart Capability
 Polarity Protected
 Operating Temperature: -10°C to 70°C
 Storage Temperature: -40°C to 85°C
 Enviro-Shield Type 2 Coating
 Thermal Speed Control - PTC on Hub

Fan Performance Sensor:

Output: 5 volt TTL
 I_c 20mA Max.
 V_{cc} 28vdc
 Logic: High on Pass, Low on Fail
 Delay: 10 sec. \pm 4 sec.
 Latching: No
 Isolated: No

Termination:

12" Lead wires, 22 AWG, UL 1061
 Red - Power (+)
 Black - Ground (-)
 Blue/White - FPS

PQ Curve:

