

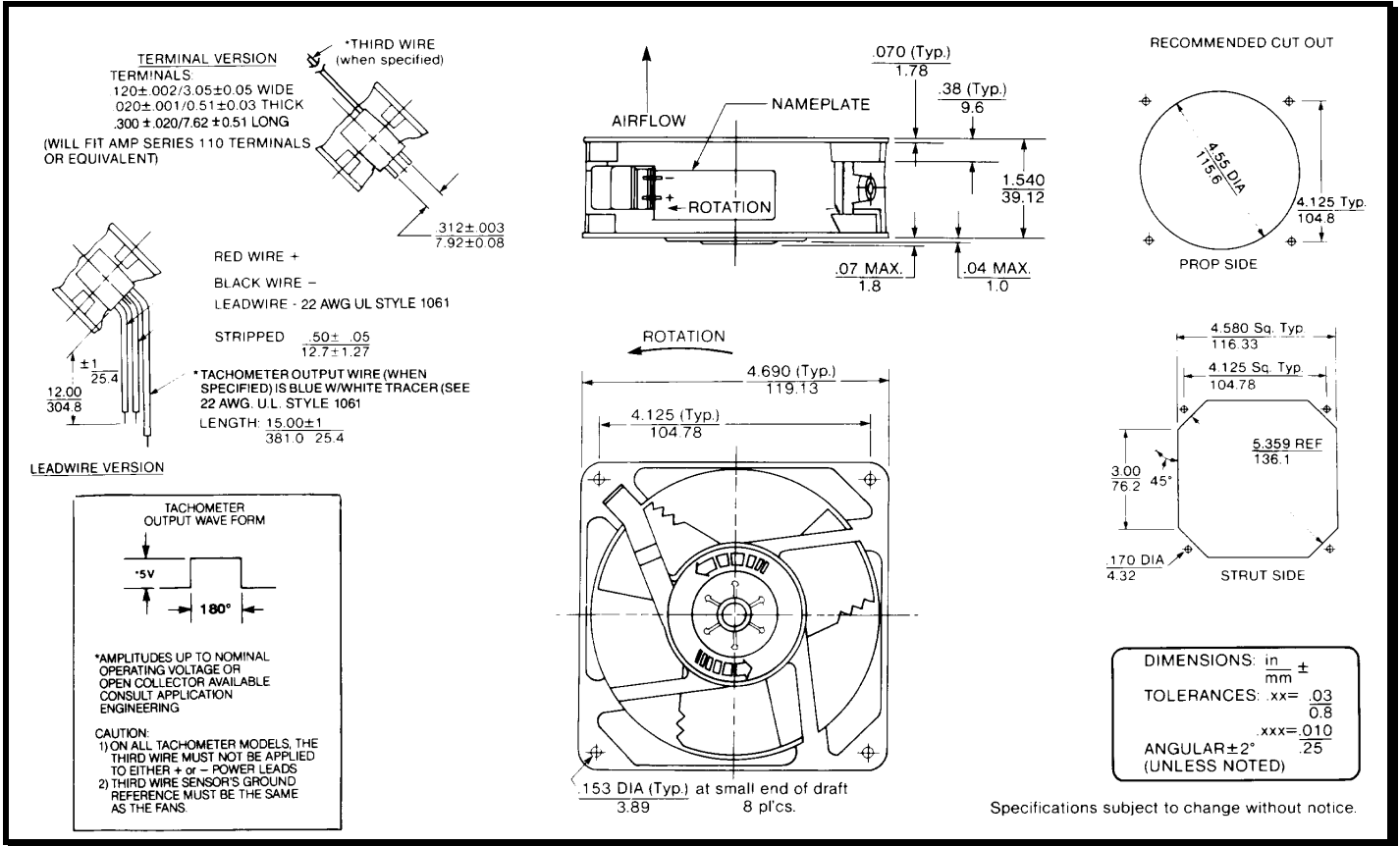
SPECIFICATIONS



Model Number: MDD48U1E
Part Number: 19040404A

Version: 01
Mar 28, 2024

Mechanical Drawing:



Motor:

Nominal Voltage = 48 VDC
 Operating Voltage Range = 36 -60 VDC
 Nominal Running Current = 0.8 amps
 Locked Rotor Current = 2.0 amps
 Running Power = 38.4 watts
 Average Speed = 6300 RPM
 Bearings = Ball
 Air Flow = 210 CFM
 Acoustic = 65.3 dBA

Construction:

Venturi: Die-Cast Zinc Alloy, Black
 Propeller: Plastic, Black, UL94V-0

Life Expectancy:

This fan is designed for continuous duty life of 55,000 hours at 70°C.

Agency Approvals:

UL, CUL, CE

Additional Features:

Brushless DC Motor
 Electronic Locked Rotor Protection
 Polarity Protection
 Automatic Restart Capability
 Operating Temperature: -10°C to 70°C
 Storage Temperature: -40°C to 90°C

Tachometer:

Output: Open Collector
 Vcc: 60 VDC max.
 Ic: 80 mA max.
 Isolated: No
 Pulses per Rev.: 2

Termination:

12" Leadwires, 22 AWG, UL 1061
 Red - Power (+)
 Black - Ground (-)
 Blue/White - Tachometer (Output)

PQ Curve:

