

SPECIFICATIONS

(RoHS Compliant)



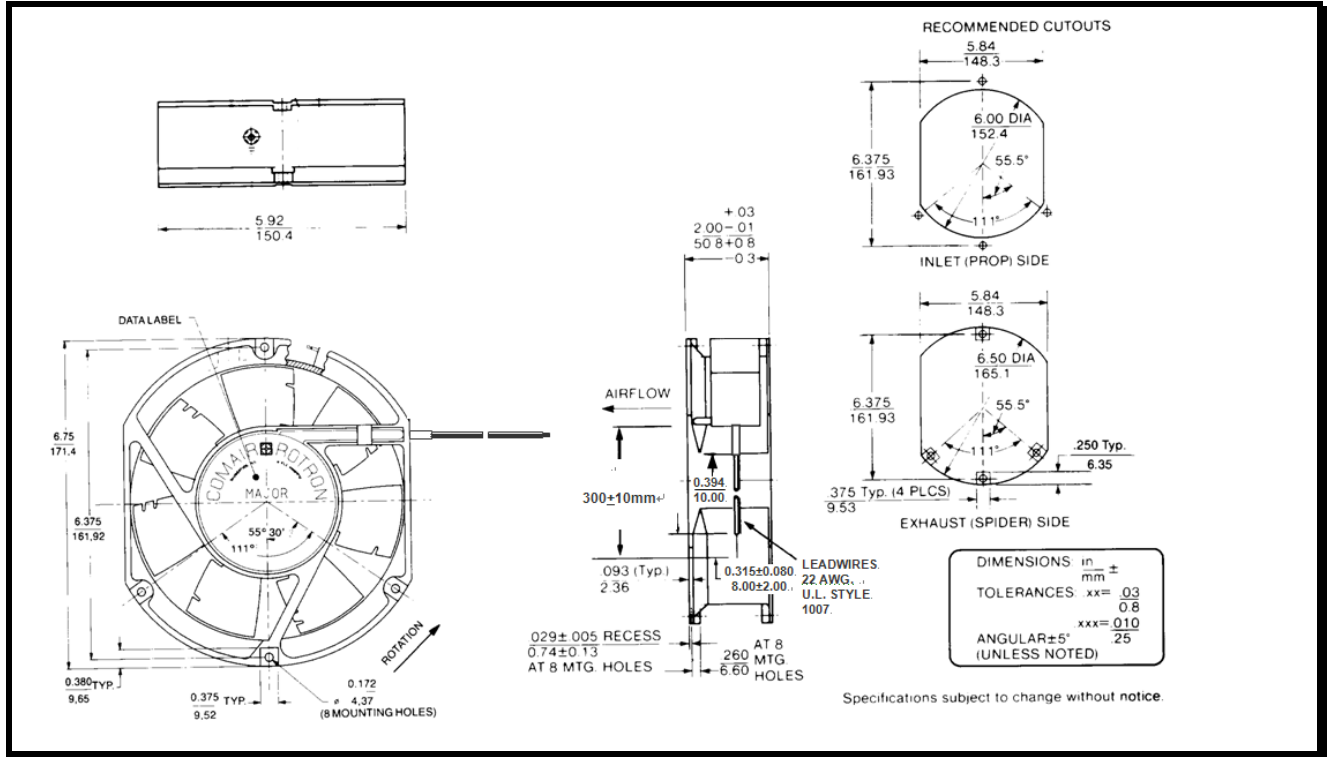
Model Number: JQD24K3E2

Part Number: 19041045A

Version: 01

May 25, 2018

Mechanical Drawing:



Motor:

Nominal Voltage	= 24 vdc
Operating Voltage Range	= 16 - 32 vdc
Nominal Running Current	= 1.1 amps
Locked Rotor Current	= 2.5 amps
Running Power	= 26.4 watts
Average Speed	= 4200 rpm
Bearings	= Ball
Air Flow at Full Speed	= 285 cfm
Acoustics at Full Speed	= 58.9 dBA

Construction:

Venturi: Die-cast aluminum, Black
Propeller: Plastic, Black, UL 94V-0

Agency Approvals:

UL, CUL, CE

Life Expectancy:

This fan is designed for continuous duty life of 58,000 hours at 70°C

Additional Features:

Brushless DC Motor
Polarity Protected
Locked Rotor Protection
Automatic Restart Capability
Operating Temperature: -10°C to 70°C
Storage Temperature: -40°C to 85°C
Programmable (PWM)

Tachometer:

Output: Open Collector
Ic: 20mA Max.
Vcc: 32Vdc Max.
Pulse per Revolution: 2
Isolated: No

Termination:

12 ± 1" AWG 22, UL 1061
Red = Power (+)
Black = Return (-)
Blue/White = Tachometer (Output)
Yellow = Program (Input)

PQ Curve:

