

SPECIFICATIONS

(RoHS Compliant)



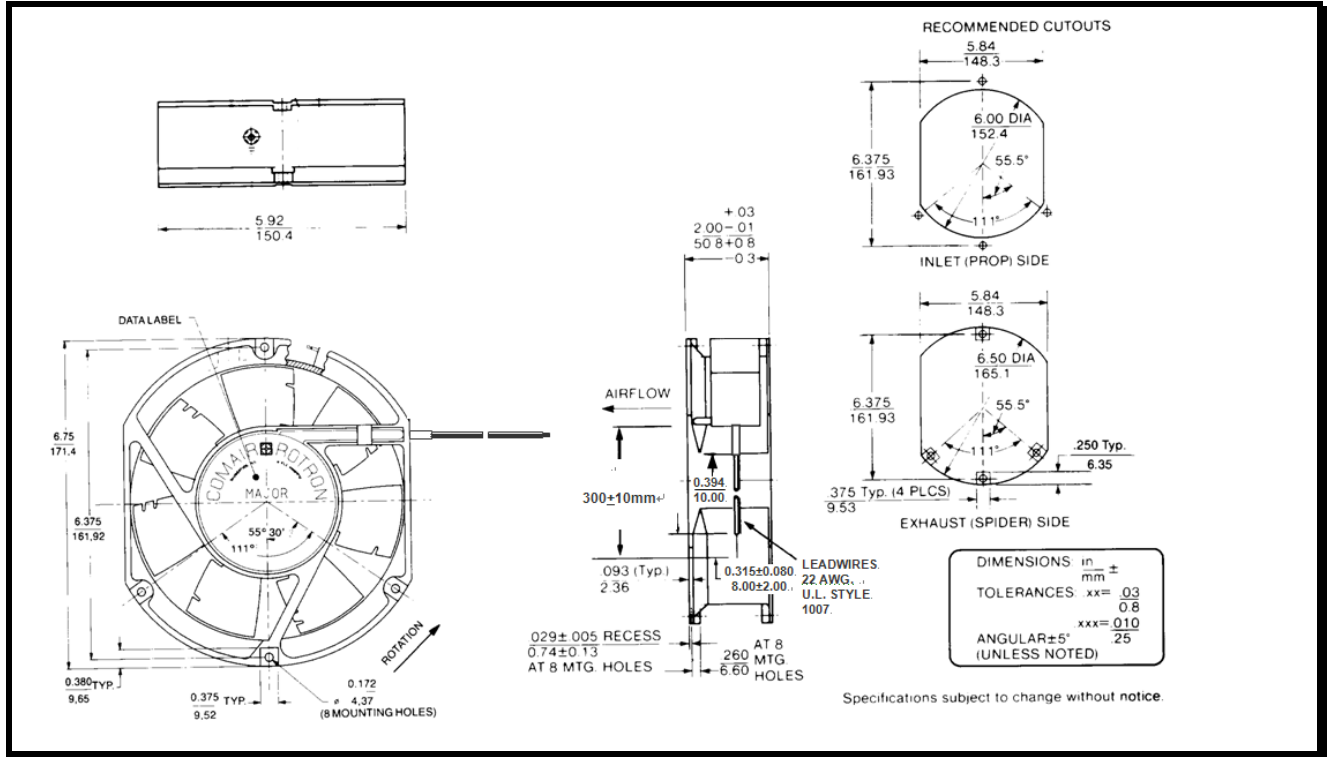
Model Number: JQD48K3E

Part Number: 19041050A

Version: 01

May 25, 2018

Mechanical Drawing:



Motor:

| | |
|-------------------------|---------------|
| Nominal Voltage | = 48 vdc |
| Operating Voltage Range | = 36 - 60 vdc |
| Nominal Running Current | = 0.6 amps |
| Locked Rotor Current | = 1.5 amps |
| Running Power | = 28.8watts |
| Average Speed | = 4200 rpm |
| Bearings | = Ball |
| Air Flow at Full Speed | = 285 cfm |
| Acoustics at Full Speed | = 58.9dBA |

Construction:

Venturi: Die-cast aluminum, Black
Propeller: Plastic, Black, UL 94V-0

Agency Approvals:

UL, CUL, CE

Life Expectancy:

This fan is designed for continuous duty life of 58,000 hours at 70°C

Additional Features:

| | |
|------------------------------|---------------|
| Brushless DC Motor | |
| Polarity Protected | |
| Locked Rotor Protection | |
| Automatic Restart Capability | |
| Operating Temperature: | -10°C to 70°C |
| Storage Temperature: | -40°C to 85°C |

Tachometer:

| | |
|-----------------------|----------------|
| Output: | Open Collector |
| Ic: | 80mA Max. |
| Vcc: | 60vdc Max. |
| Pulse per Revolution: | 2 |
| Isolated: | No |

Termination:

| | |
|-----------------------|-----------------------|
| 12±1" AWG 22, UL 1061 | |
| Red | = Power (+) |
| Black | = Return (-) |
| Blue/White | = Tachometer (Output) |

PQ Curve:

