



Comair Rotron Specification Sheet

Specification Date: Nov. 20, 2013

RoHS Compliant

Version: 03

RoHS Compliant

PART NUMBER: 19041286A
MODEL NUMBER: JQD48Z6E6X

A.) MOTOR:

RATED VOLTAGE:	48 Vdc
OPERATING VOLTAGE RANGE:	24 Vdc – 72 Vdc
LOW-START VOLTAGE:	20 Vdc
RUNNING CURRENT:	0.75 Amps
LOCKED ROTOR CURRENT:	1.25 Amps
RATED POWER:	36 Watts
NOMINAL SPEED:	4560 RPM \pm 10 % (At Free Delivery)
START UP TIME:	8 Seconds Maximum
MOTOR TYPE:	Brushless DC
MOTOR PROTECTION:	Fuse
LOCKED ROTORT PROTECTION:	Electronic
POLARITY PROTECTION:	Yes
AUTOMATIC RESTART CAPABILITY:	Yes
ROTATION:	Counter Clockwise when viewed from the Strut side
AIR FLOW DIRECTION:	Exhaust/struts

B.) MECHANICAL

DIMENSIONS:	171.5mm x 150.4mm x 50.8mm (6.75"x 5.92"x 2.00") <i>Figure 1</i>
WEIGHT:	0.84 Kg (1.84 Lbs.)
BEARING TYPE:	Permanently Lubricated Ball Bearing
VENTURI:	Single Piece, Die Cast Aluminum, Painted Black
PROPELLER:	Polycarbonate, Black, UL94V-0



Comair Rotron Specification Sheet

Specification Date: Nov. 20, 2013

RoHS Compliant

Version: 03

RoHS Compliant

PART NUMBER: 19041286A
MODEL NUMBER: JQD48Z6E6X

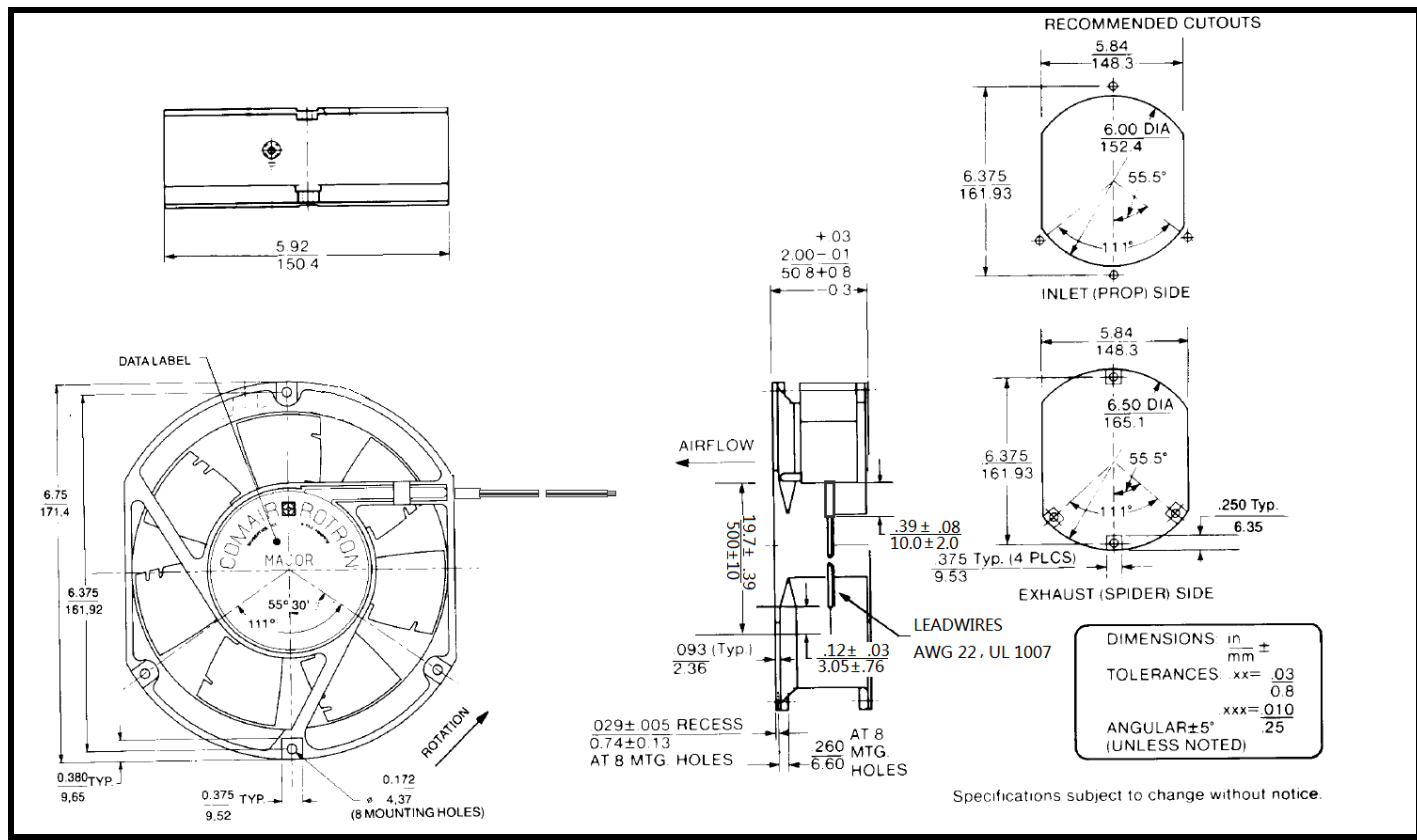


Figure 1

C.) ADDITIONAL FEATURES

TACHOMETER:

Output:	Open Collector
I _c :	20 mA Max.
V _{cc} :	60VDC Max.
Pulses per Revolution:	2
Isolated:	No

PROGRAMMABLE SPEED CONTROL:

Method:	PWM, insensitive to signal amplitude
Amplitude:	High = 2.8~20vdc Low = -0.8~0.8vdc
Frequency:	200 ~ 20 KHz
Duty cycle:	<5% 0 rpm 5%~95% Ramp increase in RPM >95% Full speed
	Open Leadwire Full speed

CURRENT LIMITING:

Automatic re-starts and current limited if impeller rotation blocked after start up.



Comair Rotron Specification Sheet

Specification Date: Nov. 20, 2013

RoHS Compliant

Version: 03

RoHS Compliant

PART NUMBER: 19041286A
MODEL NUMBER: JQD48Z6E6X

D.) ENVIRONMENTAL

OPERATING TEMPERATURE:	-10°C to +75°C at 48VDC
STORAGE TEMPERATURE:	-40°C to +85° C
HUMIDITY:	5% to 95% RH, non-condensing

E.) PERFORMANCE CHARACTERISTICS (*Derived*)

AIR FLOW:	300 CFM \pm 10%, <i>Figure 2</i> (At Free Delivery and 48.0VDC Nominal)
STATIC PRESSURE:	1.54" Inches of H ₂ O, <i>Figure 2</i> (At Shut-Off and 48.0VDC Nominal)
ACOUSTIC LEVEL:	60 dBA (Measured Freely Suspended at 1 meter per ANSI S12.11-1987 at 48VDC Nominal)

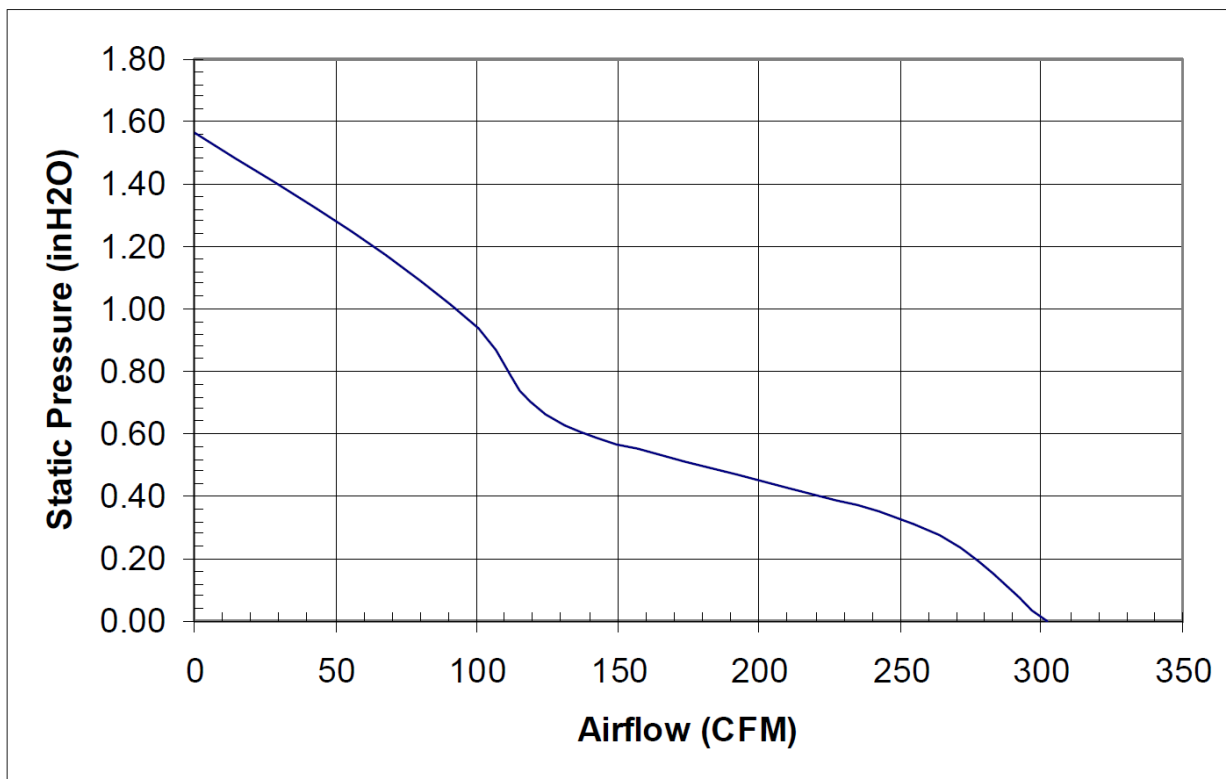


Figure 2



Comair Rotron Specification Sheet

Specification Date: Nov. 20, 2013

RoHS Compliant

Version: 03

RoHS Compliant

PART NUMBER: 19041286A
MODEL NUMBER: JQD48Z6E6X

F.) TERMINATION

Harness:

500 ± 10mm (19.7" ± 0.39")
22 AWG, UL 1007 Style
(From the edge of the venturi to the tip of the leadwire.)
Connector: VHR-4N
Pin Type: SVH-21T-P1.1
Pin 1: Black – Return(-)
Pin 2: Blue – Tachometer Output
Pin 3: Yellow – PWM Input
Pin 4: Red – Power(+)

Sleeve Tube:

PVC (UL or CSA approved)
(Sleeve tube to extend 10.0 ± 2.0mm
[0.39"±0.08"] beyond the edge of the venturi)

G.) RELIABILITY

This fan is designed for continuous duty life of 68,000 Hours at 40°C. (L10)

H.) SAFETY AGENCIES

UL, CE

I.) Flammability

The fan, including all components, meets a UL94V-0 rating or better.